



SAGE PFW

PRODUCTION

■ STREAMLINED INTEGRATION

Take control of production management, as Sage PFW seamlessly integrates aspects of your business operations to eliminate redundant data entry and automate your workflow.

■ FLEXIBLE BATCH CONTROL

Empower your production staff with the extensive batch status capabilities they need to more effectively manage the entire production cycle.

■ COMPREHENSIVE QUALITY AND COSTING CONTROL

Improve quality and cost management by utilizing versatile tracking controls that ensure complete and accurate information is available when and where it's needed.

■ POWERFUL PROCESSING

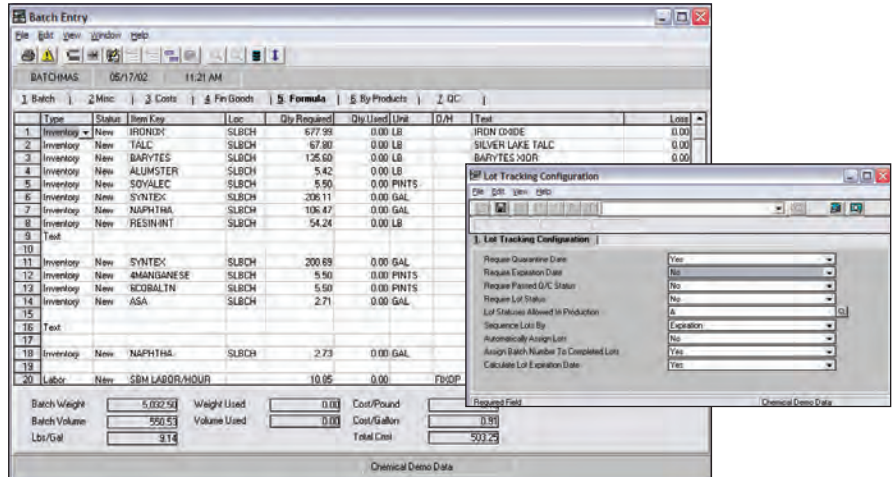
Gain a competitive advantage! With Sage PFW Production module's robust and versatile features you will reduce production shortages and maximize profits.

■ AUTOMATED EFFICIENCY

Eliminate costly manual errors and ensure that production stays on track, utilizing automated scheduling and lot tracking capabilities.

■ INSIGHTFUL REPORTS

Transform your data into the insights you need to more effectively manage your business. Extensive, instant reporting capabilities provide the insight you need for more strategic production management.



Save time and money, without sacrificing accuracy or control. With Sage PFW ERP software your organization can manage production with unparalleled flexibility, efficiency, and intelligence. Get the competitive edge you need by utilizing comprehensive, highly flexible tools for strategic planning and handling of crucial production tasks. The Sage PFW Production module puts you in control of production, enhancing quality, service, product safety, and improving your customer satisfaction by delivering more products on time.

Effective management of your organization's production cycles allow you to make smarter, more proactive decisions. Powerful automation capabilities and flexible options help expedite production scheduling, simplify batch sizing, improve the accuracy of inventory and costing functions, and generate real-time information faster and easier than ever before. You will have all of your current and historical production data available to assist you in production control and customer order processing. Production maintains detailed batch history information including actual usage of materials, quality control test results, batch number, customer, specific gravity, actual yield material costs, labor costs, overhead costs, and total costs. Sage PFW puts you in control so you can satisfy your unique business requirements today and easily adapt to changes in the future.

Sage PFW software is developed to meet the needs of your business, providing fast, dependable, customizable production management and data security. Unlike the majority of manufacturing software, Windows-based Sage PFW is the only software of its kind that was developed specifically to address the unique challenges of process manufacturing. For more information about Sage PFW and to reach a higher level of performance and profitability, please contact your local business partner, or call us directly toll free at 888-473-513. You may also visit our Web site at: www.sagesoftware.com or e-mail us at: sagepfwinfo@sage.com



Sage PFW

Production

"Having accurate, up-to-date inventory information allows us to do better production scheduling. And with Sage PFW, we can make multiple finished products out of a single bill of materials, a real convenience for us. It's exactly what a company like ours needs to succeed."

Larry Modene, MIS Manager
Halben Food Manufacturing Company, Inc.

FEATURES

Streamlined Integration

As a fully integrated solution, the Production module is the central processing unit of Sage PFW software, allowing organizations to share production information across departments without duplicate efforts. In addition to leveraging information from the Inventory Pro, Formulas, Order Entry Pro, and Material Requirements Planning (MRP) modules, the Production module eliminates redundant entry efforts by automatically updating Inventory Pro with quantities and costs. When integrated with the MSDS and/or Labeling modules you can print required safety information using open or historical production data. Production provides you with quick and easy access to detailed records, so you can make informed decisions and operate more efficiently.

Flexible Batch Control

Improve inventory tracking and production management utilizing versatile batch status features. Individual materials and finished goods can have different statuses on the same batch ticket, including New, Committed, Hold, Canceled, Requisitioned, and Finished. Unique formula and inventory status keys enable you to gain further control and prevent certain formulas and raw materials from being used in production.

Comprehensive Quality and Costing Control

Efficient and accurate costing and quality control coordination are vital to your company's success. Create your own quality control templates describing required tests, number of alterations, target results, minimum-maximum ranges, and more. Quality control information is readily available and can be printed on batch tickets, as all results are maintained for each batch-in-process and for batch history. Production provides a more accurate picture of material usage, costs, and variance by tracking the material and container quantities that are required for processing a batch, versus material and container quantities actually used during production. In addition, versatile methods for labor and overhead costing help determine precise finished goods costs. Capitalize on the tight quality and costing control of Sage PFW and keep your company on track for success.

Powerful Processing

Boost your bottom line by increasing accuracy, while saving time and money through all stages of production. Production orders may be entered for any inventory item, including finished goods, intermediates, or stock items and you can use materials from different locations. Computerized batch scaling provides automated calculations for fast, easy, and most importantly, accurate batch sizing. Batches can be sized by weight, volume, finished goods ordered, master formula percentage, premix quantity, or availability of one or all ingredients from your inventory. In addition, raw materials may be changed or added to formulas while the batch is in process. You can also define formula component quantities by weight, volume, or any other unit of measure. Save time and maximize your inventory control by committing and relieving materials by line item, batch, or range of batches and processing multiple batches simultaneously. What's more, all of these changes are reflected instantly, so inventory is always up to date and accurately maintained. Mix what you need when you need it while minimizing waste and increasing profitability.

Automated Efficiency

Keep production running smoothly and eliminate costly manual errors with the powerful scheduling and versatile lot control of Sage PFW. You can automatically schedule batches based on customer orders, minimum stock levels, or virtually any other scheduling parameter that you define. In addition, efficiently track raw materials and finished goods lot numbers, bin numbers, and serial ship container codes (SSCCs) throughout the entire production cycle. You can even utilize multiple lot numbers for single material requirement. Comprehensive history tracking provides detailed analysis of lot activities allowing you to determine which raw material lots were used in each of your products, where they were shipped, and much more

Insightful Reports

Robust reporting tools in Sage PFW provide quick and easy access to critical business information, as all reports can be tailored to your specifications using a variety of user-defined parameters. You can print a single batch ticket, a range of tickets by batch number, all tickets scheduled to begin on a specified date, by production status, responsibility, or simply print all unprinted tickets. Sage PFW utilizes one of the most powerful reporting tools on the market, Crystal Reports®, which allows you to customize the batch-ticket layout or any other report to suit your company's needs. The Production module provides the reporting capabilities you need to control your production cycle and maximize business opportunities.

