



SAGE PFW

PERVASIVE.SQL VERSION 8

■ **POWERFUL DATABASE TOOLS**

Efficiently extract the information you need directly from your database, monitor database connections, peak performance times, and more with the powerful tools in Pervasive.SQL.

■ **EXCEPTIONAL PERFORMANCE, SECURITY, AND SCALABILITY**

Innovative technology features deliver exceptional performance with strong data integrity across a wide range of scalable configurations. Pervasive.SQL offers optional tools that further ensure data integrity by monitoring and reporting all activity in the database, down to a single byte.

■ **EASY TO ADMINISTER**

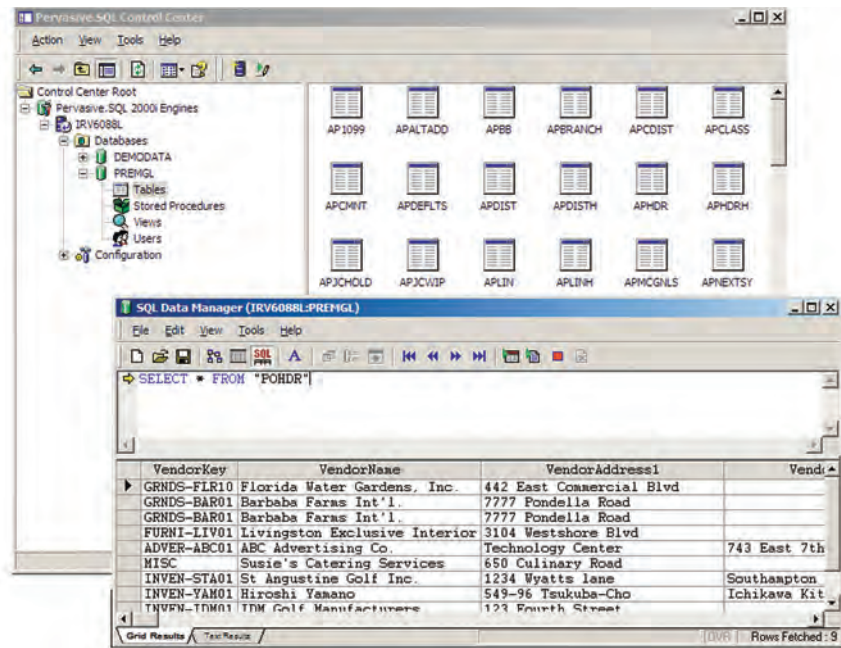
With Pervasive.SQL's self-tuning engine running 24x7, maintenance is straightforward. In fact, it virtually eliminates the need for a dedicated database administrator..

■ **MAXIMUM FLEXIBILITY**

A full range of possible configurations and platforms empower you to customize the system for maximum functionality.

■ **EXTENSIVE STANDARDS SUPPORT**

Developers have the freedom to choose the data access methods that best suit their needs.



As a medium-sized company, you need an embedded, easy-to-administer, high-performance database that can keep pace with your growth and support your diverse range of applications. With its flexible architecture, Sage PFW ERP and Pervasive.SQL version 8 is the ideal choice. This affordable SQL engine provides you with the best of both worlds—the performance of transactional data access and the robustness of high-speed, relational access.

Best of all, self-tuning Pervasive.SQL version 8 is easy and inexpensive to maintain, virtually eliminating the need for a dedicated administrator. The solution packs more than enough power to support all your Sage PFW applications, along with any other client/server and Web-based applications your business might operate. Companies that wish to bring the scope and power of the server engine to the desktop without compromising quality and performance can capitalize on the advanced capabilities of the Pervasive.SQL version 8 Workgroup for Windows.

Pervasive.SQL version 8 is the insightful solution for companies seeking to maintain their competitive edge with a database that offers unparalleled performance, security, reliability, and multi-platform support. Get Pervasive.SQL version 8 and experience a higher level of performance and cost efficiency. For more information about Pervasive.SQL version 8, please contact your local authorized business partner, or call us directly toll free at 1-888-473-5135. You may also visit our Web site at: www.sagesoftware.com or e-mail us at: sagepfwinfo@sage.com



Sage PFW

Pervasive.SQL Version 8

"Sage PFW and its modules are very smooth and surprisingly easy to use. We now have a completely integrated system—exactly what we need for our diverse inter-company environment."

Susan Blair, Director of Enterprise Finance
Citizen Potawatomi Nation

FEATURES

Powerful Database Tools

- The SQL Manager is tightly integrated with the Pervasive Control Center and provides exceptional data management features, including:
 - Easy creation of SQL statements that display data in grid or text format.
 - Query building capability that enables you to select tables, columns, and SQL syntax templates from lists.
 - SQL Data Manager Display Tab allows in-place data edits quickly and easily.
 - The SQL Query Editor and Executor allows for simplified creation, modification, and deletion of database tables.
- The Pervasive System Analyzer (PSA) combines the core functionalities of InstallScout and SmartScout utilities. The PSA runs automatically as the first phase of installation in order to optimize your system for implementation. You may also run the PSA at any time to test MKDE and SRDE connectivity, archive Pervasive.SQL components, or restore previously archived Pervasive.SQL components. PSA simplifies maintaining, testing, and restoring the system.
- The Pervasive Software Monitor (PSM) utility enables you to monitor various resources being used within the database. For example, you can access detailed information about open files, active users, as well as current, peak, and maximum values for remote and files, handles, locks, transactions, and more.

Exceptional Performance, Security, and Scalability

- Pervasive.SQL version 8 boasts a high-performance engine that unleashes the power of your data by delivering dual database engines in a single box.
- Dynamic Cache Accelerator further enhances performance with a two-tiered cache system that dramatically improves data read access performance and reduces network traffic.
- Features such as archival logging and automatic server recovery ensure data integrity. Continuous operations mean you can back up files while they are in use by an application.
- A Distributed Tuning Interface (DTI) provides developers with access to engine internals for further fine-tuning.
- Tight integration between all configurations ensures flexibility and scalability that can adapt, on demand, to your company's changing needs, allowing you to focus your energy and time on maintaining your competitive edge.

Easy to Administer

- Pervasive.SQL version 8 is designed for plug-and-play, low-maintenance functionality. This translates into improved cost-efficiency and productivity.
- With a complete installation toolkit, Pervasive.SQL allows transparent deployment of the database engine as part of the business application.
- Auto-reconnect technology avoids minor networking issues by seamlessly reconnecting workstations to a server engine in case of a network error.
- The Distributed Tuning Interface (DTI) lets you integrate the Pervasive.SQL tool set within your application. In most cases remote non-technical personnel can handle any unresolved problems. It all adds up to fewer administrator headaches and major cost savings.
- Maintenance-free operations guarantee that you will spend your time focusing on achieving your business objectives rather than downtime and redoing work.

Maximum Flexibility

- Pervasive.SQL version 8 is backward-compatible and supports your legacy applications and databases, enabling you to leverage existing technology investments.
- Cross-platform dynamic parameters eliminate the need to re-master the database environment from platform to platform.

Extensive Standards Support

- Developers can choose the data access method they prefer and use multiple methods concurrently.
- Standard support includes ANSI SQL, OLE DB, JDBC, iODBC, JC-JDBC, and ADO.
- Choose from a variety of languages to create Internet or intranet applications, including Java, ASP, Perl, and PHP.